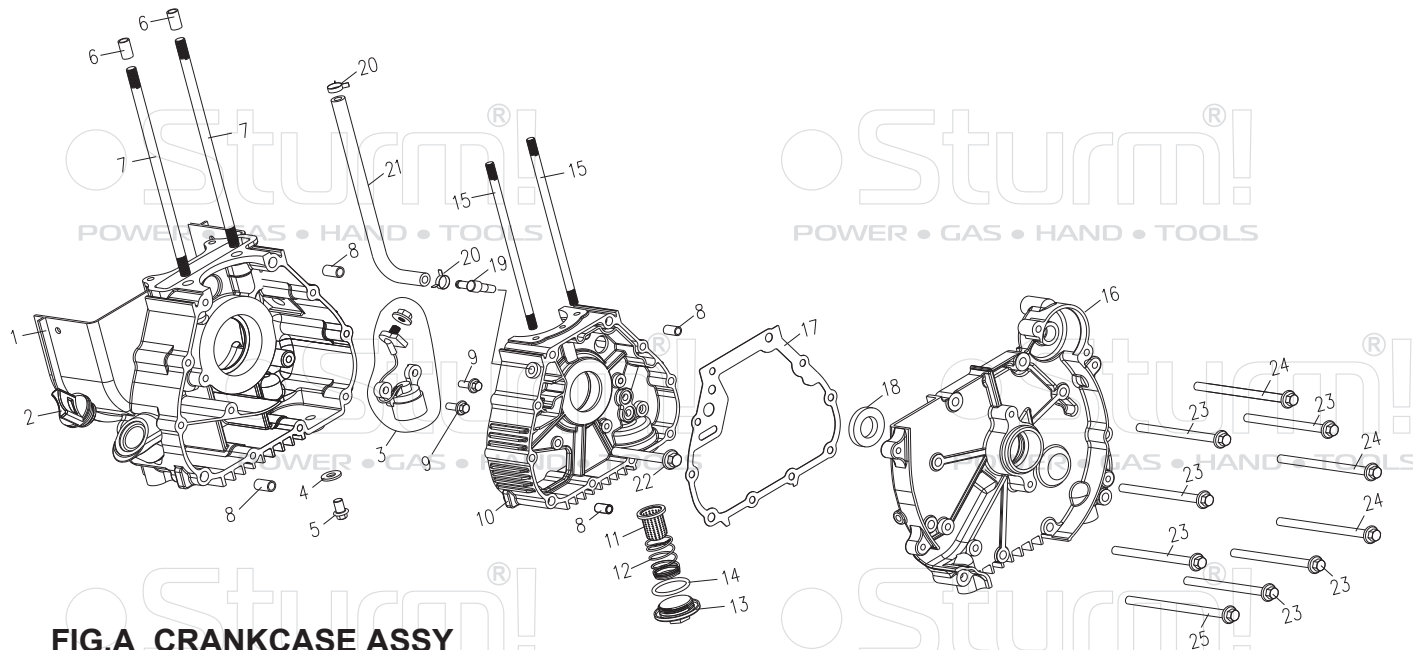


# **PART CATALOGUE**

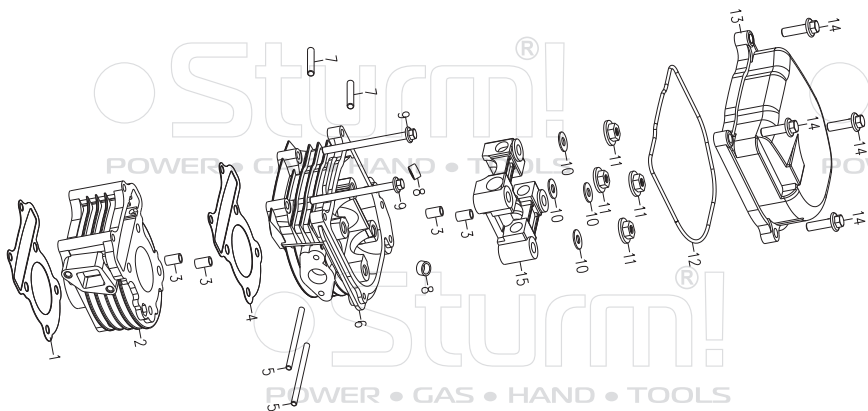
**PG87101I**

**VERSION No. : ST20140730**



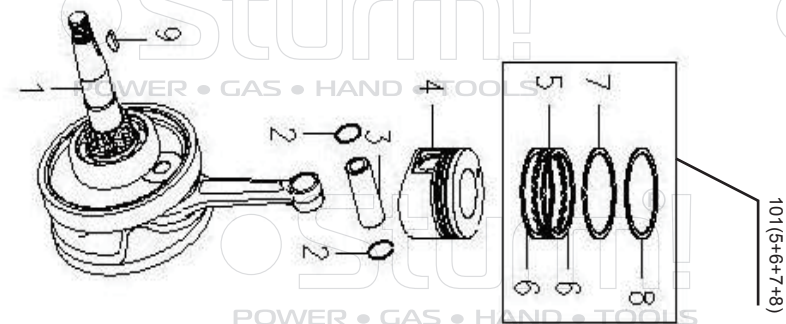
**FIG.A CRANKCASE ASSY**

No.	Description	No.	Description
1	LEFT CYLINDER BLOCK	14	O-RING30.5X3
2	OIL PLUG ASSEMBLY	15	B STUD 7×168
3	OIL SENSOR ASSEMBLY	16	RIGHT COVER
4	AL-GASKET 8×15×2	17	WASHER
5	BOLT M8×12	18	OIL SEAL 16.4×30×5
6	SPECIAL DOWEL PIN 8×14	19	PIPE JOINT COMPONENT
7	A STUD M7×176.5	20	PIPE CLAMP
8	DOWEL PIN 8X14	21	RUBBER HOSE II
9	BOLT M6X18	22	HEXAGON FLANGE BOLTS M6×52
10	RIGHT CYLINDER BLOCK	23	HEXAGON FLANGE BOLTS M6×85
11	OIL-FILTER COMPONENT	24	HEXAGON FLANGE BOLTS M6×95
12	OIL-FILTER SPRING	25	HEXAGON FLANGE BOLTS M6×105
13	OIL-FILTER COVER		



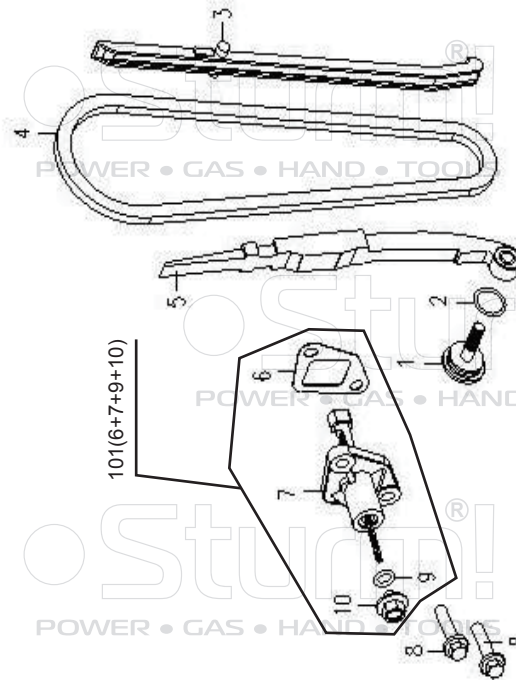
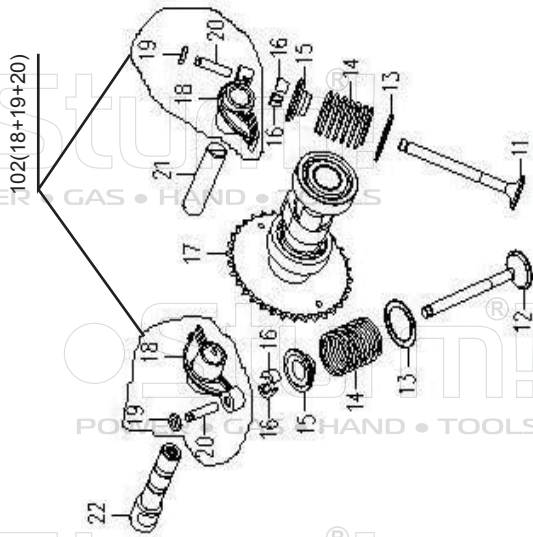
**FIG.B CYLINDER HEAD**

No.	Description
1	CYLINDER GASKET
2	CYLINDER COMPONENT
3	SPECIAL DOWEL PIN 8×14
4	CYLINDER HEAD GASKET
5	STUDS M5×97
6	CYLINDER HEAD COMPONENT
7	STUDS M6X32
8	VALVE OIL SEAL COMPONENT
9	HEXAGON FLANGE BOLTS M6×18
10	COPPER WASHER 7
11	HEXAGON NUTS WITH FLANGE M7
12	SEAL RING
13	CYLINDER HEAD COVER
14	HEXAGON FLANGE BOLTS M6×25
15	CAMSHAFT HOLDER SEAT



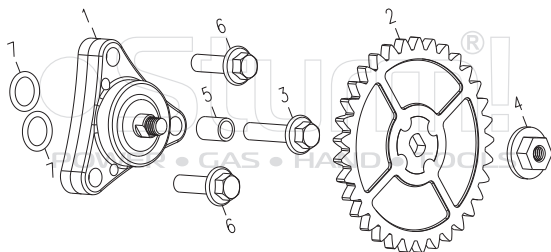
**FIG C. CRANKSHAFT PISTON**

No.	Description
1	CRANKSHAFT CONNECTING ROD ASSY
2	PISTON PIN CLIP
3	PISTON PIN
4	PISTON
5	OIL RING
6	OIL RING CLIP
7	GAS SEAL RING
8	CHROME GAS SEAL RING
9	WOODRUFF KEY
101	PISTON RING ASSEMBLY(5+6+7+8)



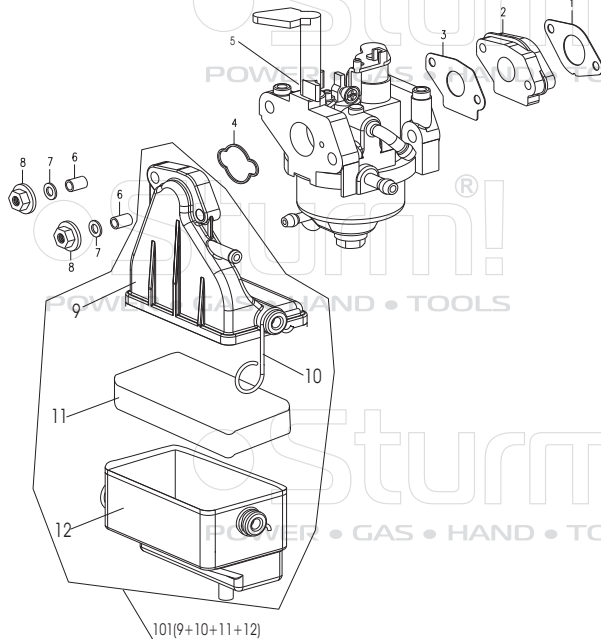
**FIG D. CAMSHAFT**

No.	Description	No.	Description	No.	Description
1	TENSION ROD BOLT	9	WASHER 8	17	CAMSHAFT ASSY
2	O-RING 15.2X1.5	10	ADJUSTER CAP	18	VALVE ROCKER
3	CAMSHAFT CHAIN GUIDE PARTS	11	EXHAUST VALVE	19	LOCKNUT
4	CAMSHAFT CHAIN 6.35x82	12	INTAKE VALVE	20	TAPPET ADJUSTING SCREW
5	TENSION ROD ASSY	13	VALVE SPRING SEAT	21	EXHAUST VALVE ROCKSHAFT
6	REGULATOR GASKET	14	VALVE OUTER SPRING	22	INTAKE VALVE ROCKSHAFT ASSY
7	CAMSHAFT CHAIN REGULATOR	15	VALVE OUTER SPRING RETAINER	101	CAMSHAFT CHAIN REGULATOR ASSEMBLY(6+7+9+10)
8	HEXAGON FLANGE BOLTS M6x18	16	VALVE FOLDER	102	VALVE ROCKER ASSY(18+19+20)



**FIG E. OIL PUMP**

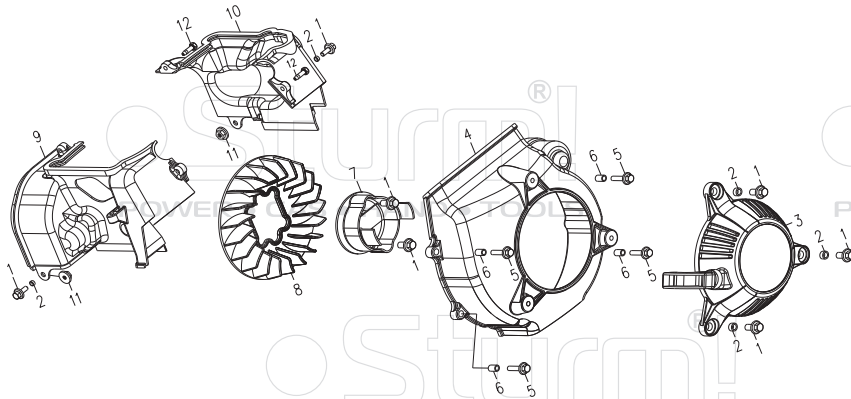
No.	Description
1	LUB OIL PUMP
2	OIL PUMP GEAR
3	HEXAGON FLANGE BOLTS M6×25
4	HEXAGON NUTS WITH FLANGE M6
5	DOWEL PIN 8×11
6	HEXAGON FLANGE BOLTS M6×20
7	O-SEAL RING 9×1.6



**FIG F. AIR CLEANER**

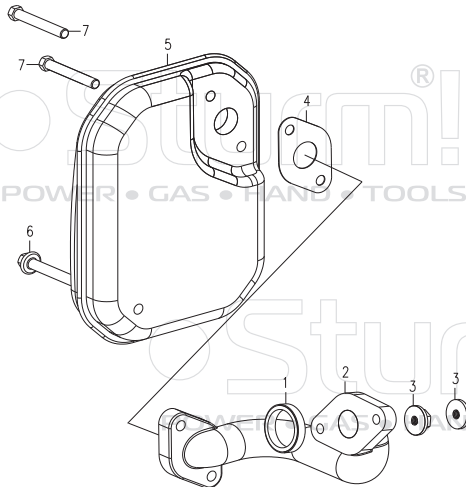
No.	Description
1	INSULATION GASKET
2	INSULATION COMPONENTS
3	CARBURETOR GASKET
4	AIR CLEANER GASKET
5	CARBURETOR ASSEMBLY
6	FAN VOLUTE BUSH
7	GASKET 5
8	HEXAGON NUTS WITH FLANGE M5
9	TOP COVER
10	CLIP
11	SPONGE
12	BOTTOM COVER
101	AIR CLEANER ASSEMBLY

101(9+10+11+12)



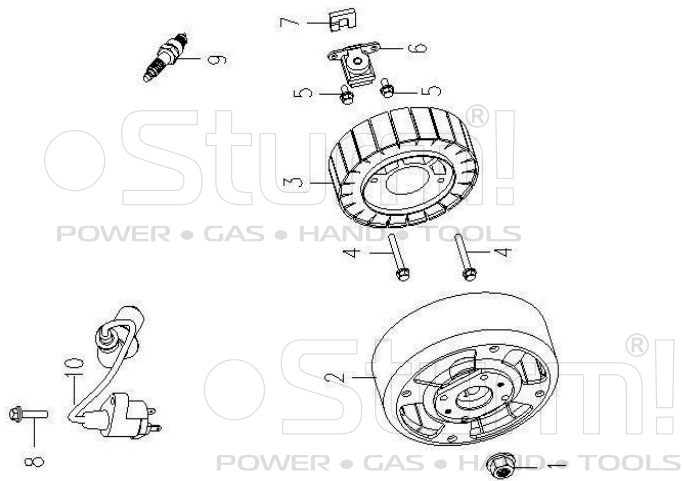
**FIG H. RECOIL STARTER**

No.	Description
1	HEXAGON FLANGE BOLTS M5×12
2	GUIDE BUSH
3	RECOIL STARTER ASSEMBLY
4	FAN VOLUTE
5	HEXAGON FLANGE BOLTS M5×22
6	FAN VOLUTE BUSH
7	START HUB ASSEMBLY
8	COOLING FAN
9	GUIDE B
10	GUIDE A
11	HEXAGON NUTS WITH FLANGE M5
12	TAP SCREW ST4.8×16-F.H



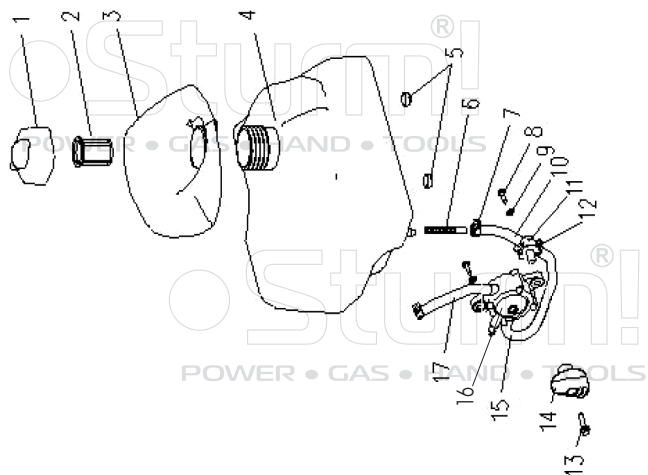
**FIG I. MUFFLER**

No.	Description
1	MUFFLER PIPE GASKET
2	MUFFLER PIPE
3	METAL HEXAGON NUTS WITH FLANGE M6
4	MUFFLER GASKET
5	MUFFLER ASSY
6	BOLT M6×70
7	BOLT M6×45



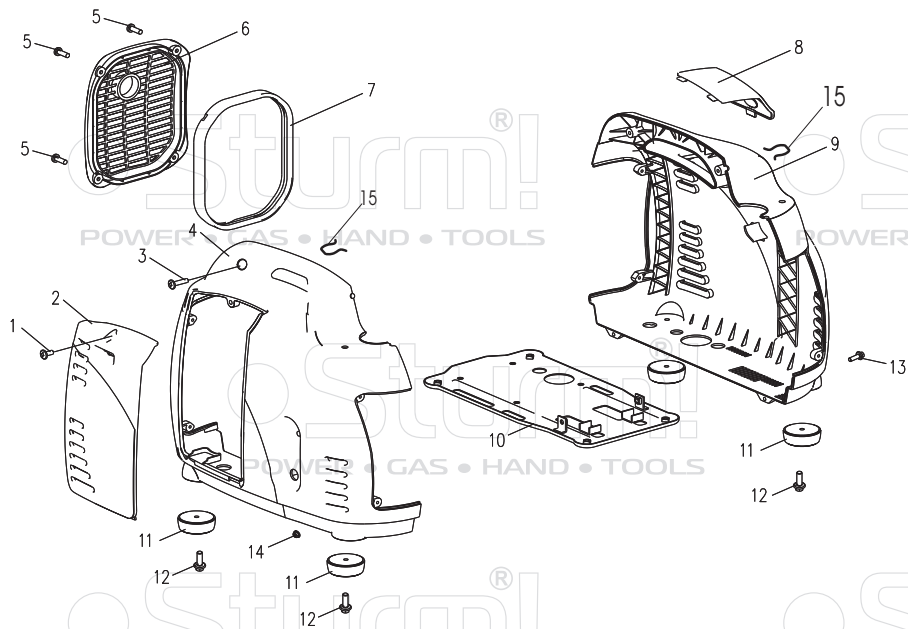
### FIG J. GENERATOR

No.	Description
1	HEXAGON NUTS WITH FLANGE M10X1.25
2	ROTOR
3	STATOR
4	HEXAGON FLANGE BOLTS M6×30
5	HEXAGON FLANGE BOLTS M5×12
6	TRIGGER
7	RUBBER BLOCK
8	HEXAGON FLANGE BOLTS M6×25
9	SPARK PLUG A7RTC
10	IGNITION PARTS



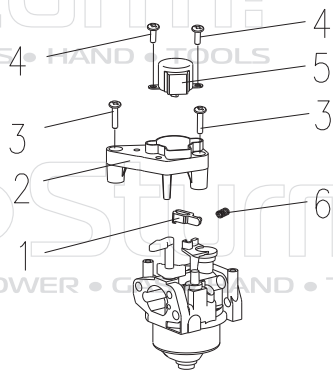
### FIG K. FUEL TANK

No.	Description
1	FUEL CAP ASSY
2	FUEL FILTER
3	RUBBER FUEL TANK PORT
4	FULE TANK
5	TANK BASE PAD
6	OUTLET STRAINER
7	CLAMP Ø11
8	TAP SCREW ST4.2×19
9	GASKET Ø4
10	SINGLE-END EXPAND FUEL TUBE
11	FUEL COCK ASSY
12	CLAMP Ø9
13	SCREW M4×16
14	FUEL COCK HANDLE
15	SPECIAL FUEL TUBE
16	FUEL PUMP
17	FUEL RUBBER HOSE



**FIG L.**

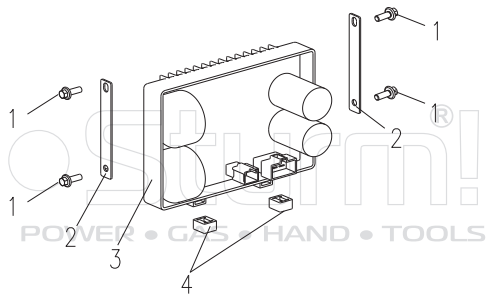
No.	Description
1	PAN HEAD SCREWS M6X12
2	SIDE COVER
3	PAN HEAD SCREWS M6×16
4	RIGHT COVER SHELL
5	PAN HEAD SCREWS M5X12
6	MUFFLER COVER
7	MUFFLER COVER SEAL RING
8	UPPER COVER
9	LEFT COVER SHELL
10	CHASSIS
11	RUBBER DAMP PAD
12	HEXAGON FLANGE BOLTS M6×16
13	SMALL PAN HEAD SCREWS M5X16
14	NUT M5
15	CLIP



**FIG M. GOVERNOR**

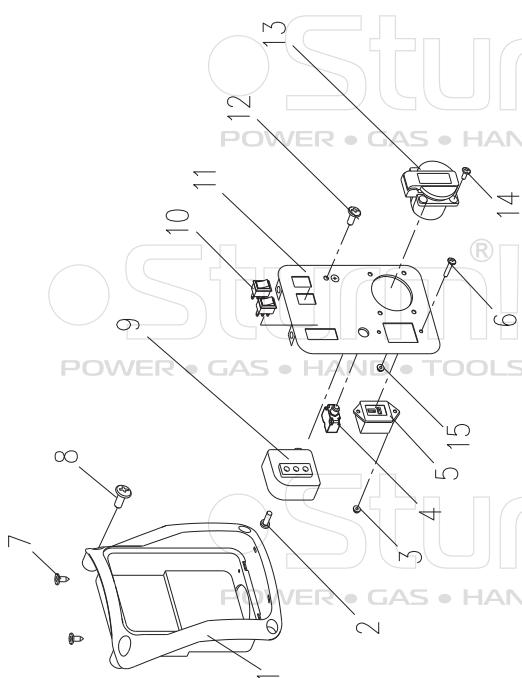
No.	Description
1	DRIVE ARM
2	STEPPER MOTOR HOLDER
3	SCREW M4×12
4	SCREW M3×8
5	STEPPER MOTOR ASSY
6	DRIVE ARM SPING





**FIG N. INVERTER**

No.	Description
1	HEXAGON FLANGE BOLTS M6X12
2	FIXED PLATE
3	INVERTER ASSEMBLY 1.0KW 220V 50HZ
4	INVERTER BASE PAD



**FIG O. CONTROL PANEL**

No.	Description
1	PANEL BOX
2	SCREW M5×16
3	HEXAGON NUTS WITH FLANGE M3
4	OVERLOAD PROTECTOR 4.5A
5	T-DC CHARGING SOCKET
6	SCREW M3×16
7	TAP SCREW ST4.2×13
8	PAN HEAD SCREWS M5×12
9	IGNITION CONTROLLER IC-2500
10	ROCKER SWITCH-REVERSE
11	PANEL COMPONENTS
12	SCREW M5×8
13	EUROPEAN SOCKET
14	COUNTERSUNK HEAD SCREW M4X12
15	HEXAGON NUTS WITH FLANGE M4
16	TAP SCREW ST4.2×6.5-F